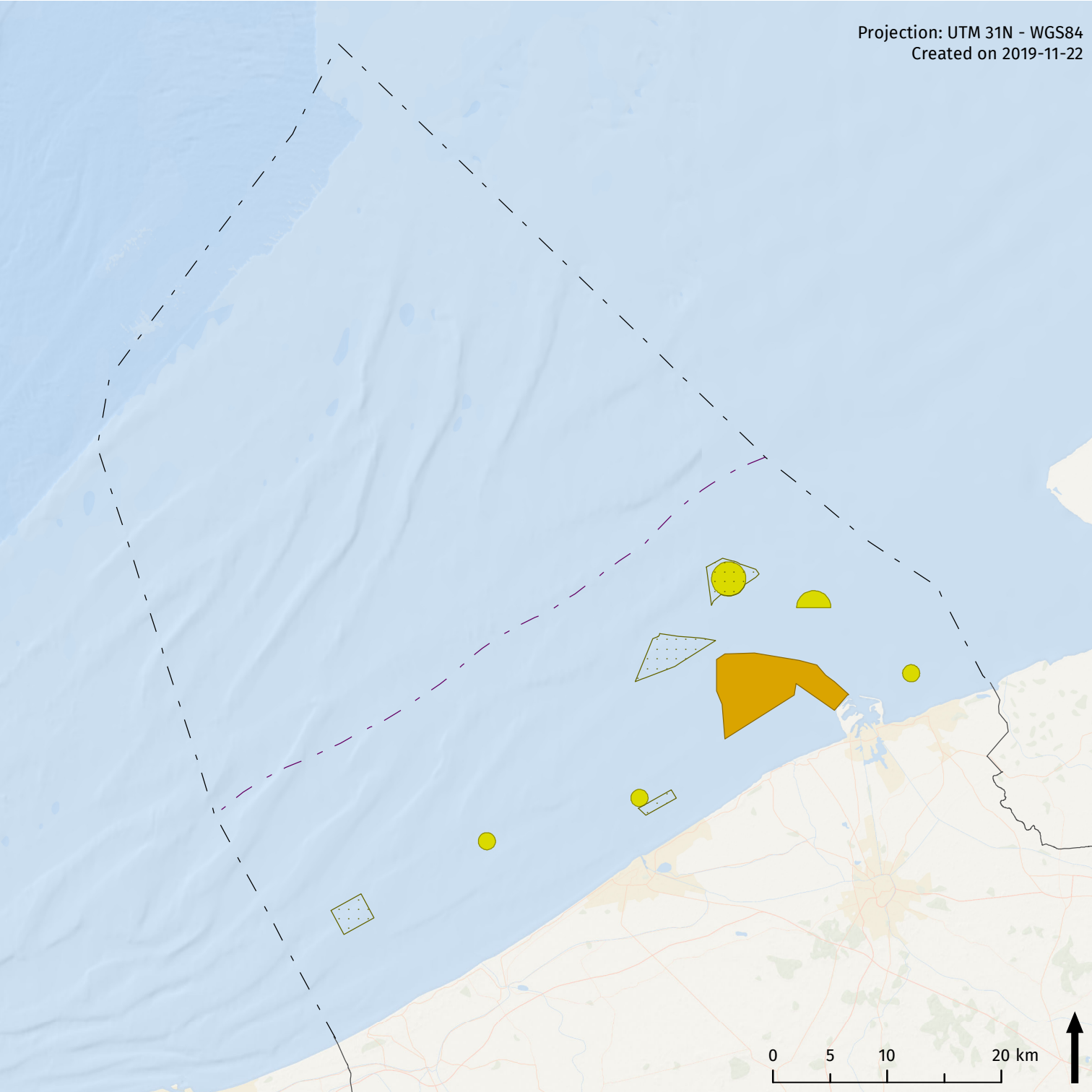


Dredging and dumping: Marine spatial planning



Projection: UTM 31N - WGS84
Created on 2019-11-22



Legend

- - 12 nautical mile line
- - Belgian part of North Sea
- Dumping site for dredged materials

- Reservation area for an alternative dumping site
- Replacement areas dumping sites

Sources

Base map: ESRI
Belgium: NGI
Maritime boundaries: Vlaamse Hydrografie
Marine spatial planning: Royal Decree of 22 May 2019 establishing the marine spatial plan for the period from 2020 to 2026 in the Belgian sea areas