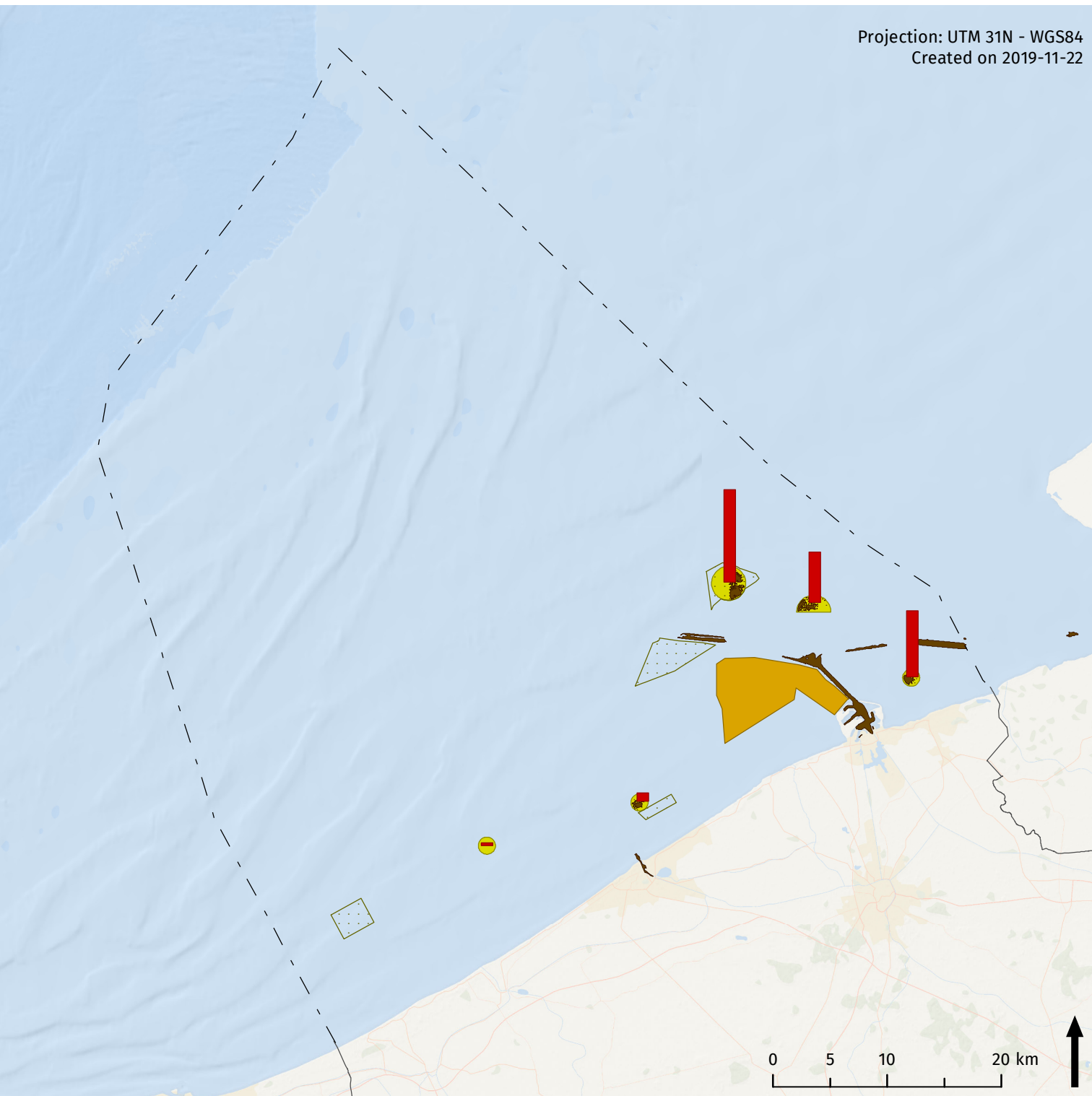


Dredging and dumping: Dredging and dumping sites and intensity

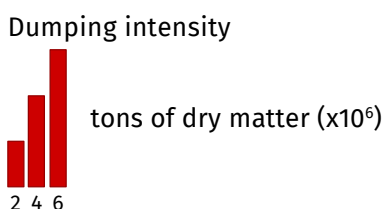


Projection: UTM 31N - WGS84
Created on 2019-11-22



Legend

- - Belgian part of North Sea
- Dumping and dredging locations
- Dumping site for dredged materials
- Reservation area for an alternative dumping site
- Replacement areas dumping sites



Sources

Base map: ESRI
Belgium: NGI
Maritime boundaries: Vlaamse Hydrografie
Dumping and dredging locations (2016):
Maritieme Toegang
Marine spatial planning: Royal Decree of 22 May 2019 establishing the marine spatial plan for the period from 2020 to 2026 in the Belgian sea areas
Dumping intensity (2015):
Lauwaert, B.; De Witte, B.; Devriese, L.; Fettweis, M.; Martens, C.; Timmermans, S.; Van Hoey, G.; Vanlede, J. (2016).
Synthesis report on the effects of dredged material dumping on the marine environment (licensing period 2012-2016).
RBINS-OD Nature/ILVO/AMT - Afdeling Maritieme Toegang/
AMCS/FHR: Brussels. 107 pp.