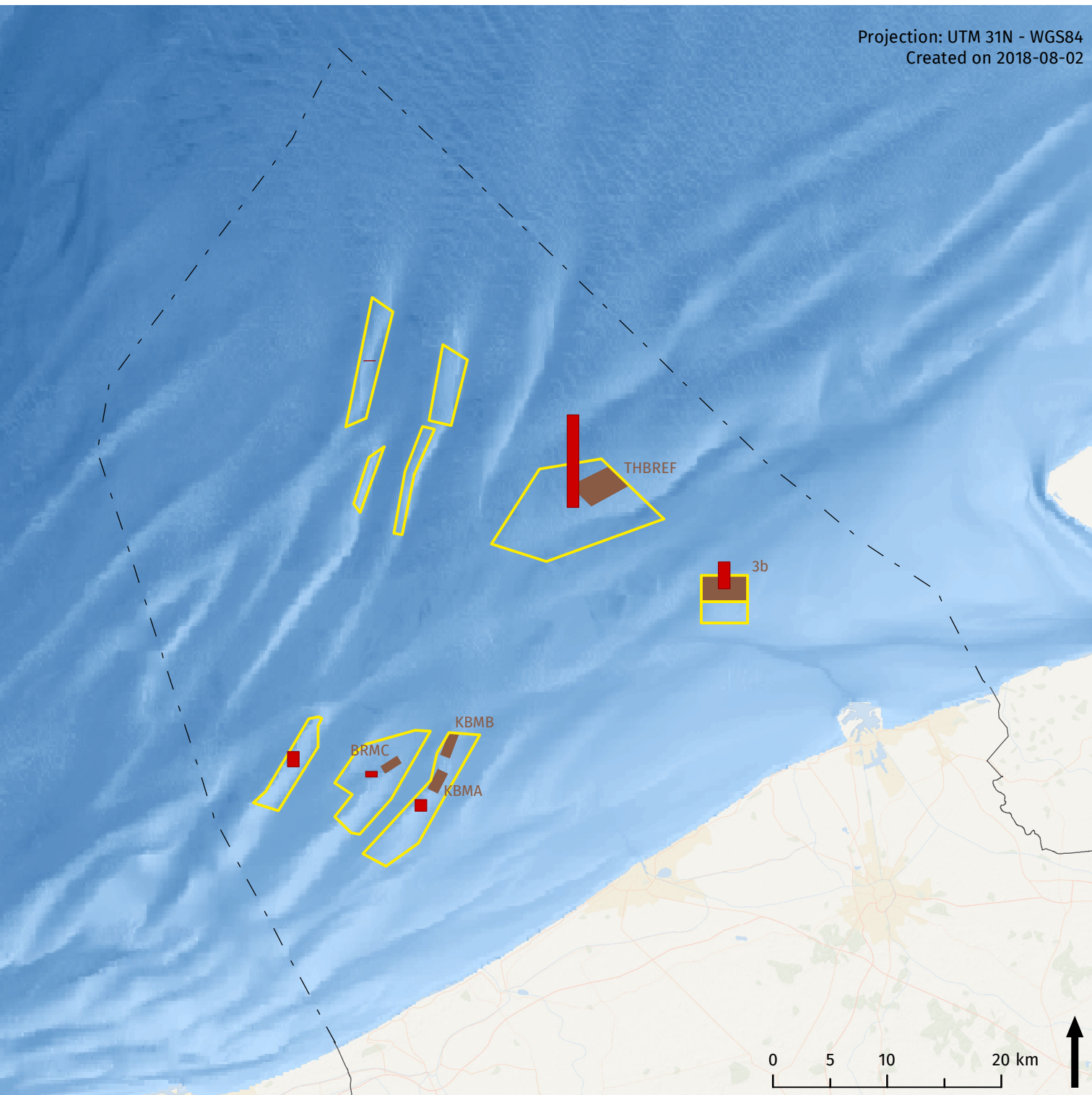


# Sand and gravel extraction



Projection: UTM 31N - WGS84  
Created on 2018-08-02



## Legend

--- Belgian part of North Sea

Exploitation area

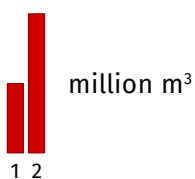
Closed zone

Bathymetry

-60 m

0 m

Extraction intensity



## Sources

Base map: ESRI

Belgium: NGI

Maritime boundaries: Vlaamse Hydrografie

Exploitation area: marineatlas.be (RBINS)

Closed zone: FOD Economie

Bathymetry North Sea: EMODnet Bathymetry Consortium (2018): EMODnet Digital

Bathymetry (DTM)

Extraction intensity (2016): FOD Economie, Dienst

Continental Plat