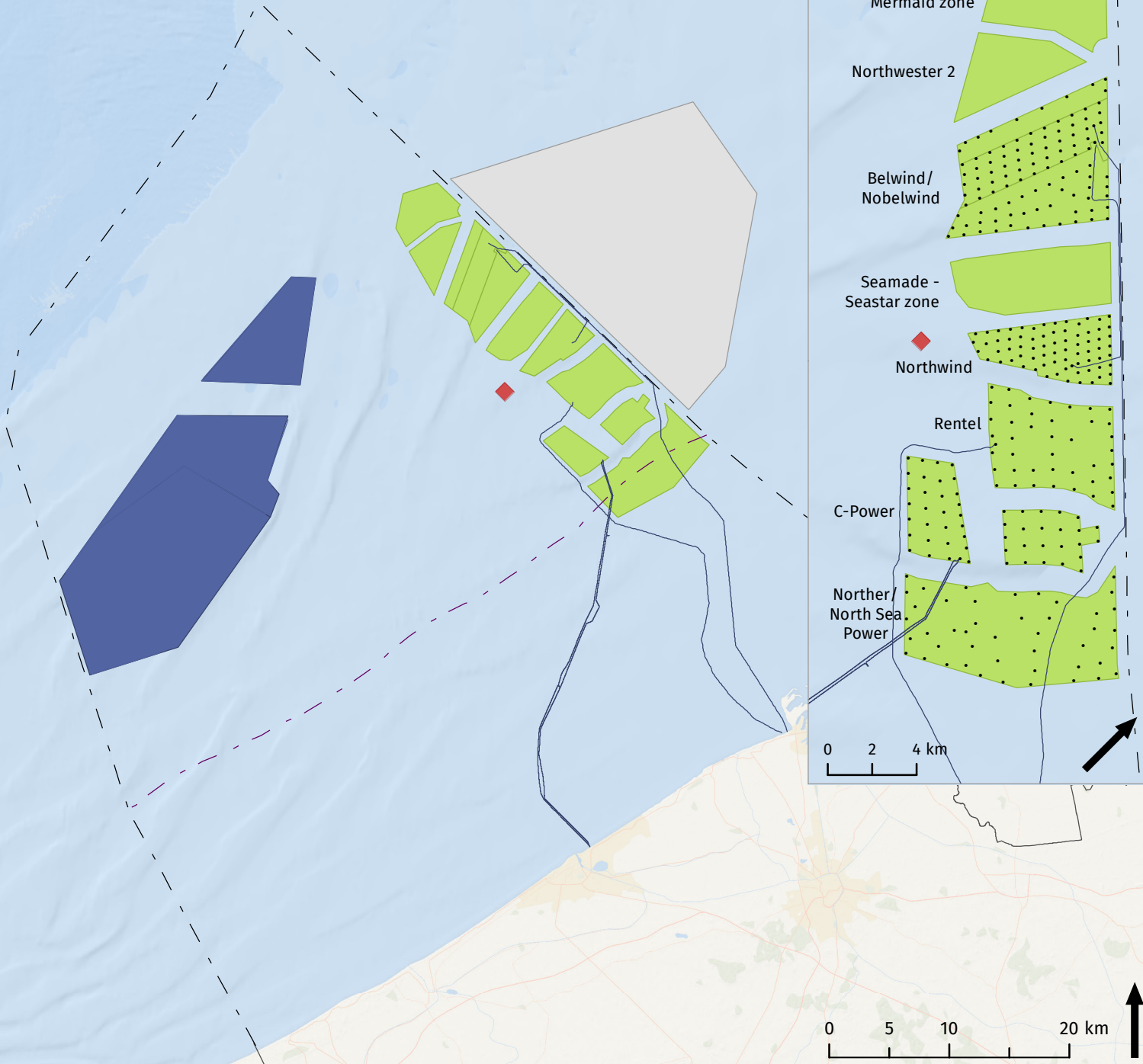










# Energy: Offshore wind farms

Projection: UTM 31N - WGS84  
Created on 2020-12-03



## Legend

-  12 nautical mile line
-  Belgian part of North Sea
-  Plug at sea
-  Additional area for renewable energy
-  Wind farms (Europe)
-  Operational wind farms (Belgium)
-  Turbine
-  Export cable

## Sources

Base map: ESRI  
Belgium: NGI  
Maritime boundaries: Vlaamse Hydrografie  
Export cables, turbines, wind farms: Operational Directorate Natural Environment (RBINS)  
Plug at sea: based on 4C Offshore  
Wind farms (Europe): EMODnet Human Activities  
Additional area for renewable energy: Royal Decree of 22 May 2019 establishing the marine spatial plan for the period from 2020 to 2026 in the Belgian sea areas