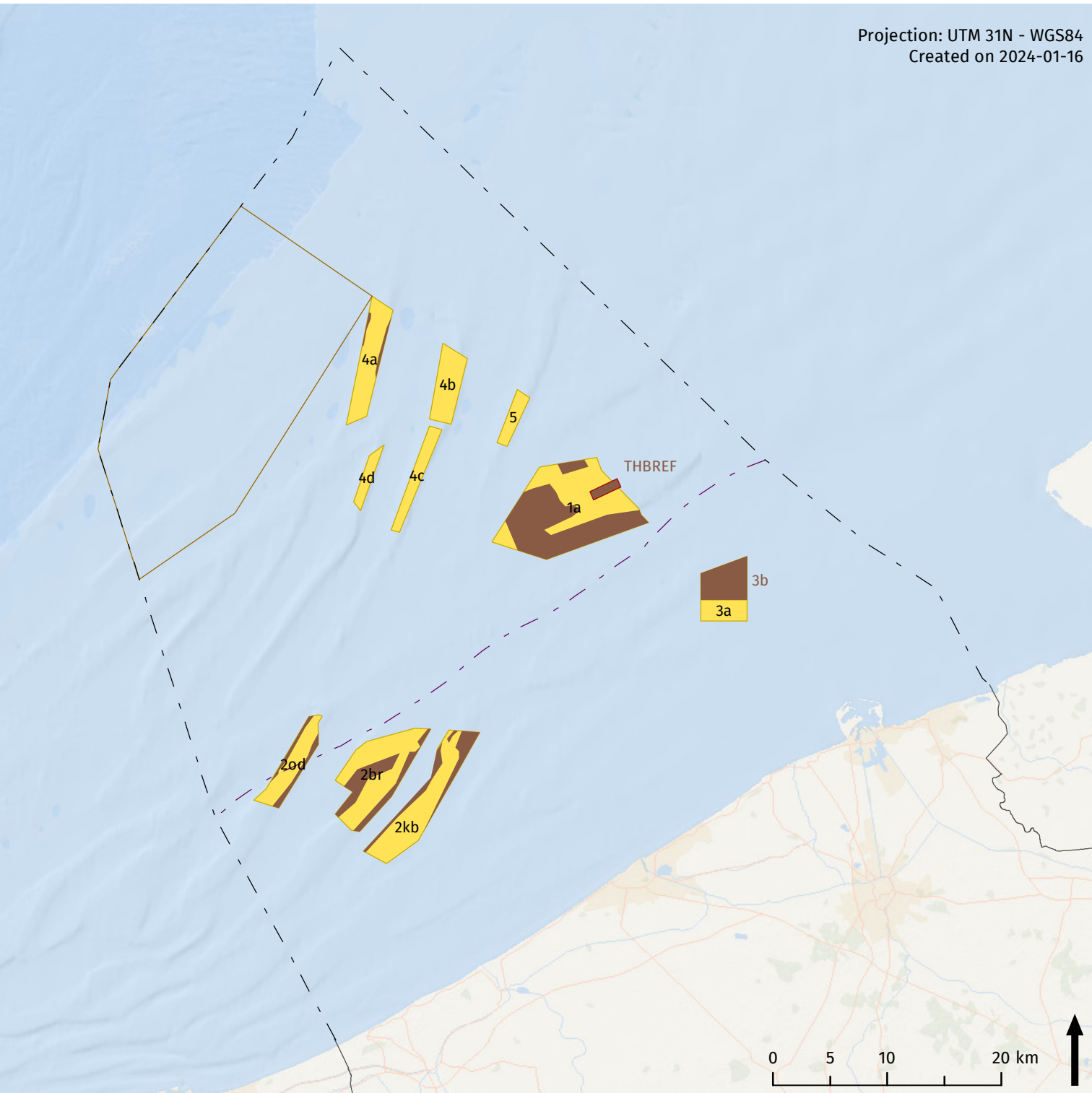


# Sand and gravel extraction: Marine spatial planning



Projection: UTM 31N - WGS84  
Created on 2024-01-16



## Legend

- 12 nautical mile line
- Belgian part of North Sea
- Exploitation area
- Exploration zone
- Monitoring zone
- Closed zone

## Sources

Base map: ESRI  
Belgium: NGI  
Maritime boundaries: Vlaamse Hydrografie  
Marine spatial planning: Royal Decree of 22 May 2019 establishing the marine spatial plan for the period from 2020 to 2026 in the Belgian sea areas  
Closed zone: FOD Economie