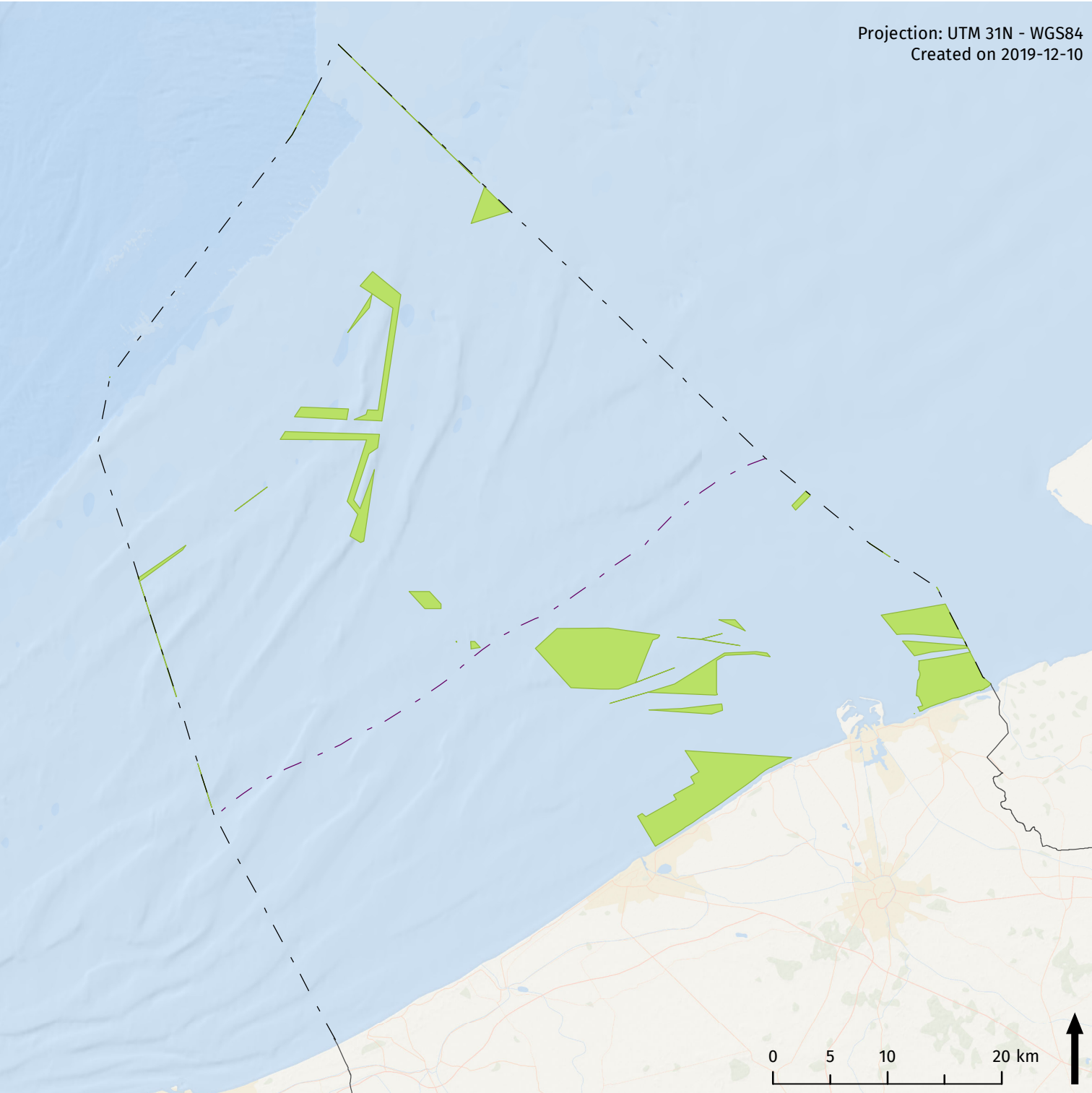


Open space



Projection: UTM 31N - WGS84
Created on 2019-12-10



Legend

- - 12 nautical mile line
- - Belgian part of North Sea
- Open space (MSP 2020-2026)

Sources

Base map: ESRI
Belgium: NGI
Maritime boundaries: Vlaamse Hydrografie
Marine spatial planning: Royal Decree of 22 May 2019 establishing the marine spatial plan for the period from 2020 to 2026 in the Belgian sea areas